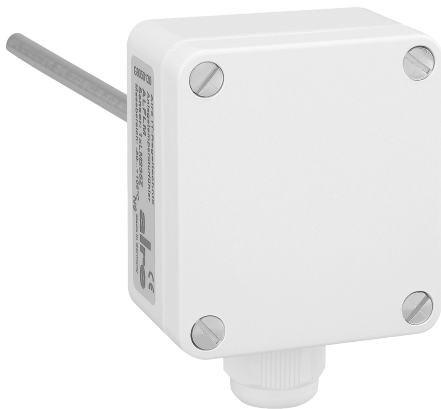


## Data Sheet EKFP 100/50

Article number: G9140010

Built-in duct temperature sensor, PT 100, installation length 65 mm

The EKF installation duct sensors are used to measure temperatures in liquids and gases in pipes, air ducts or containers. The mounting flange (MF) is required for use in air ducts. Nickel-plated brass thermowells (THMs) must be used for use in liquids. Immersion sleeves made of stainless steel V4A (THV) are recommended for aggressive media. Thermowells or mounting flanges are not included in the scope of delivery and must be ordered separately as accessories.



|                                |                                      |
|--------------------------------|--------------------------------------|
| Active temperature measurement | No                                   |
| Connection cross-section       | 0,14 – 2,5 mm <sup>2</sup>           |
| Version of sensor              | temperature sensor for gases/liquids |
| Cover fastening                | bayonet fastening                    |
| Plug-in length                 | 65 mm                                |
| Electric connection            | screw terminals                      |
| With explosion protection      | No                                   |
| Colour                         | pure white                           |
| RAL colour number (similar)    | 9010                                 |
| Sensor element                 | PTC internal                         |

|                                    |  |
|------------------------------------|--|
| Suitable for fluids                | Yes                                      |
| Suitable for gases                 | Yes                                      |
| Suitable for duct mounting         | Yes                                      |
| Suitable for pipe mounting         | Yes                                      |
| Bearing temperature                | -30 ... 70 °C                            |
| Length of sensor                   | 50 mm                                    |
| Max. air humidity (non-condensing) | 95 % r.H.                                |
| Housing material                   | plastic PA                               |
| With housing                       | Yes                                      |
| With supply line                   | No                                       |
| Mounting/attachment                | in imm. sleeve, prot. coil, on tube, etc |
| Surface finish                     | gloss                                    |
| Passive temperature measurement    | Yes                                      |
| Protection class                   | III                                      |
| Sensor element outside the housing | Yes                                      |
| Sensor element inside the housing  | No                                       |
| Sensor type                        | PT-100                                   |
| Safety and EMC                     | in accordance with DIN EN 60730          |
| Ambient temperature                | -30 ... 70 °C                            |
| Dimensions (W x H x D)             | 58 mm x 64 mm x 99 mm                    |

