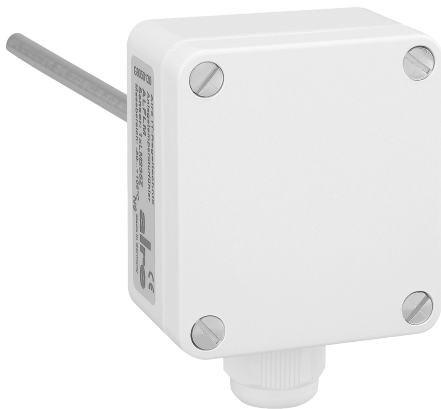


Data Sheet EKFP 1000/100

Article number: G9140150

Built-in duct temperature sensor, PT 1000, installation length 115 mm

The EKF installation duct sensors are used to measure temperatures in liquids and gases in pipes, air ducts or containers. The mounting flange (MF) is required for use in air ducts. Nickel-plated brass thermowells (THMs) must be used for use in liquids. Immersion sleeves made of stainless steel V4A (THV) are recommended for aggressive media. Thermowells or mounting flanges are not included in the scope of delivery and must be ordered separately as accessories.



Active temperature measurement	No
Connection cross-section	0,14 – 2,5 mm ²
Version of sensor	temperature sensor for gases/liquids
Cover fastening	bayonet fastening
Plug-in length	115 mm
Electric connection	screw terminals
With explosion protection	No
Colour	pure white
RAL colour number (similar)	9010
Sensor element	PTC internal

Suitable for fluids	Yes
Suitable for gases	Yes
Suitable for duct mounting	Yes
Suitable for pipe mounting	Yes
Bearing temperature	-30 ... 70 °C
Length of sensor	100 mm
Max. air humidity (non-condensing)	95 % r.H.
Housing material	plastic PA
With housing	Yes
With supply line	No
Mounting/attachment	in imm. sleeve, prot. coil, on tube, etc
Surface finish	gloss
Passive temperature measurement	Yes
Protection class	III
Sensor element outside the housing	Yes
Sensor element inside the housing	No
Sensor type	PT-1000
Safety and EMC	in accordance with DIN EN 60730
Ambient temperature	-30 ... 70 °C
Dimensions (W x H x D)	58 mm x 64 mm x 149 mm

