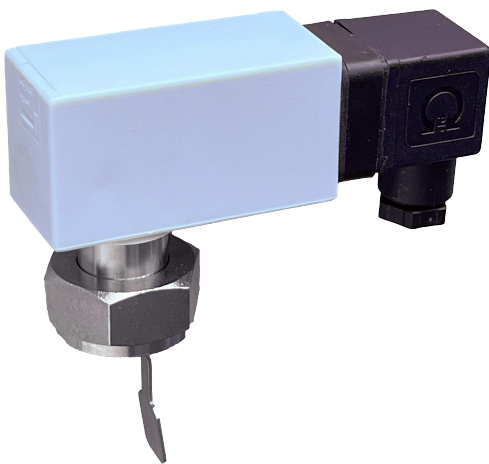


## Data Sheet JSW-3/4

Article number: H530945

JSW flow switch for 3/4"

For monitoring small and medium, non-aggressive liquid quantities in pipes with a diameter of 3/4". The device does not require a supply voltage. Installation: Vertically in a horizontal pipe. Calming distance at least 5 times the pipe diameter upstream and downstream of the paddle. Installation/fastening is carried out using a G 3/8" union nut on a soldering socket (for soldering into a standard copper T-piece with 1/2" outlet) or T-piece. Not tested for drinking water. Switching point falling 7.0 ... 9.5 l/min. Switching point rising 9.0 ... 11.0 l/min. Switching differential 2.0 l/min. Accuracy  $\pm 15\%$  of the set target value (switching values only apply when the flow monitor is installed in our T-piece. The switching values increase when copper T-pieces are used).



Number of control ranges	1
Output signal	switching
Pipe dimension	3/4"
Electric connection	screw terminals
With explosion protection	No
Colour	black
Sensor element	flow paddle
Function type (systems engineering)	monitor

Internal setting	Yes
Bearing temperature	-20 ... 70 °C
Max. air humidity (non-condensing)	95 % r.H.
Housing material	plastic
Paddle material	stainless steel
Carrier material	Ms nickel-plated
Max. Pressure	2500000 Pa
Max. switching voltage	230 VAC, 50 Hz
Max. switching current	5 A
Medium	Fluid
Min. switching voltage	24 VAC, 50 Hz
Min. switching current	100 mA
Mounting/attachment	Pipe mounting
Surface finish	matt
Switching element	microswitch
Switching contact	two-way contact
Potential free switching contact	Yes
Switching power	1150 W
Protection class	IP65
Protection class	II, following appropriate mounting
Safety and EMC	in accordance with DIN EN 60730
Ambient temperature	-20 ... 70 °C

Degree of contamination

2

Dimensions (W x H x D)

102 mm x 72,5 mm x 30 mm

