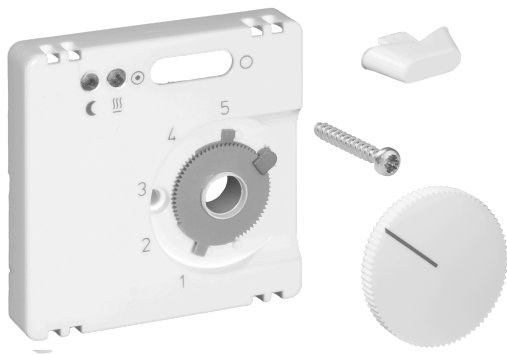


Data Sheet JZ-005.110

Article number: UN990018

Cover set for floor temperature controller FETR 101.715, 55 x 55, pearl white (RAL1013), glossy

The flush-mounted devices from alre fit directly into many switch ranges in conjunction with the corresponding cover set (cover) without an intermediate frame. The modular principle (alre basic device + alre cover set 55 x 55 mm + frame from the switch manufacturer) and various colors (RAL 9010 pure white glossy/matt, RAL 1013 cream white glossy, RAL 9016 traffic white glossy/matt) enable perfect visual integration into your preferred switch range.



Scannable symbol/barrier-free	No
Logo/labelling	other labelling
Design	central plate
Colour	pearl white
RAL colour number (similar)	1013
Suitable for bus system button connection	No
Halogen-free	Yes
Inspection window/light outlet	Yes
Housing material	plastic PC
With interchangeable lens/symbol	No

With labelling box	No
Mounting/attachment	screw fastening
Surface finish	gloss
Surface protection	untreated
Protection class	IP30
Material quality	PC
Dimensions (W x H x D)	55 mm x 55 mm x 11 mm



	a x b
JZ-xxx.0xx	50 x 50 mm
JZ-xxx.1xx	55 x 55 mm
JZ-xxx.2xx	55 x 55 mm
JZ-xxx.3xx	63 x 63 mm
JZ-xxx.4xx	70 x 70 mm