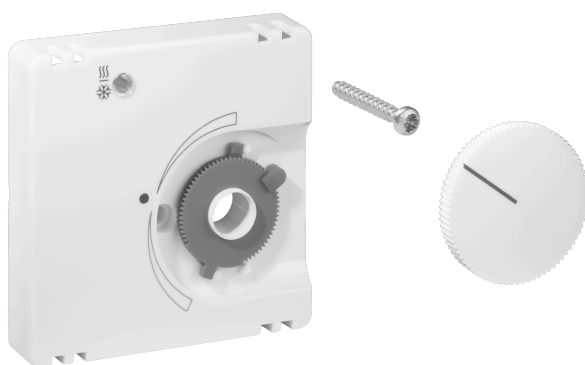


## Data Sheet JZ-008.120

Article number: UN990094

Cover set for room thermostats for chilled ceilings KTRRU-052.244, 55 x 55, traffic/studio white (RAL9016), glossy

The flush-mounted devices from alre fit directly into many switch ranges in conjunction with the corresponding cover set (cover) without an intermediate frame. The modular principle (alre basic device + alre cover set 55 x 55 mm + frame from the switch manufacturer) and various colors (RAL 9010 pure white glossy/matt, RAL 1013 cream white glossy, RAL 9016 traffic white glossy/matt) enable perfect visual integration into your preferred switch range.



|   |                 |
|---|-----------------|
| Scannable symbol/barrier-free             | No              |
| Logo/labelling                            | other labelling |
| Design                                    | central plate   |
| Colour                                    | traffic white   |
| RAL colour number (similar)               | 9016            |
| Suitable for bus system button connection | No              |
| Halogen-free                              | Yes             |
| Inspection window/light outlet            | Yes             |
| Housing material                          | plastic PC      |
| With interchangeable lens/symbol          | No              |

|                        |                       |
|------------------------|-----------------------|
| With labelling box     | No                    |
| Mounting/attachment    | screw fastening       |
| Surface finish         | gloss                 |
| Surface protection     | untreated             |
| Protection class       | IP30                  |
| Material quality       | PC                    |
| Dimensions (W x H x D) | 55 mm x 55 mm x 11 mm |



|            | a x b      |
|------------|------------|
| JZ-xxx.0xx | 50 x 50 mm |
| JZ-xxx.1xx | 55 x 55 mm |
| JZ-xxx.2xx | 55 x 55 mm |
| JZ-xxx.3xx | 63 x 63 mm |
| JZ-xxx.4xx | 70 x 70 mm |