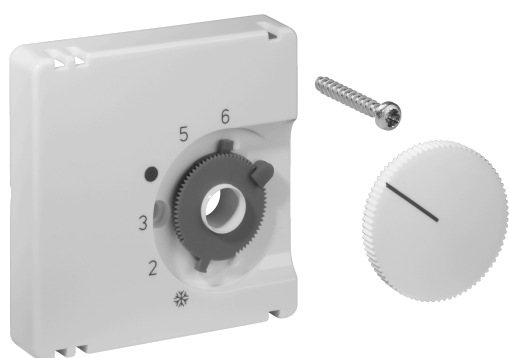


Data Sheet JZ-001.010

Article number: UN990045

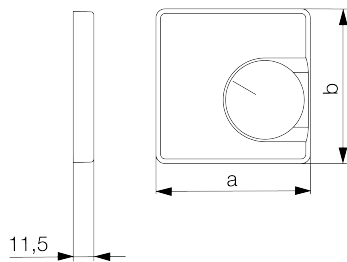
Cover set for room thermostat RTBSU / FTR, 50 x 50, pearl white (RAL1013), glossy

The flush-mounted devices from alre fit into all standard switch ranges in conjunction with the corresponding cover set (cover) and intermediate frame. The modular principle (alre basic device + alre cover set 50 x 50 mm + intermediate frame from the switch manufacturer + frame from the switch manufacturer) and various colors (RAL 9010 pure white glossy/matt, RAL 1013 cream white glossy, RAL 9016 traffic white glossy/matt) enable perfect visual integration into your preferred switch range.



| | |
|---|-----------------|
| Scannable symbol/barrier-free | No |
| Logo/labelling | other labelling |
| Design | central plate |
| Colour | pearl white |
| RAL colour number (similar) | 1013 |
| Suitable for bus system button connection | No |
| Halogen-free | Yes |
| Inspection window/light outlet | No |
| Housing material | plastic PC |

| | |
|----------------------------------|-----------------------|
| With interchangeable lens/symbol | No |
| With labelling box | No |
| Mounting/attachment | screw fastening |
| Surface finish | gloss |
| Surface protection | untreated |
| Protection class | IP30 |
| Material quality | PC |
| Dimensions (W x H x D) | 50 mm x 50 mm x 11 mm |



| | a x b |
|------------|------------|
| JZ-xxx.0xx | 50 x 50 mm |
| JZ-xxx.1xx | 55 x 55 mm |
| JZ-xxx.2xx | 55 x 55 mm |
| JZ-xxx.3xx | 63 x 63 mm |
| JZ-xxx.4xx | 70 x 70 mm |